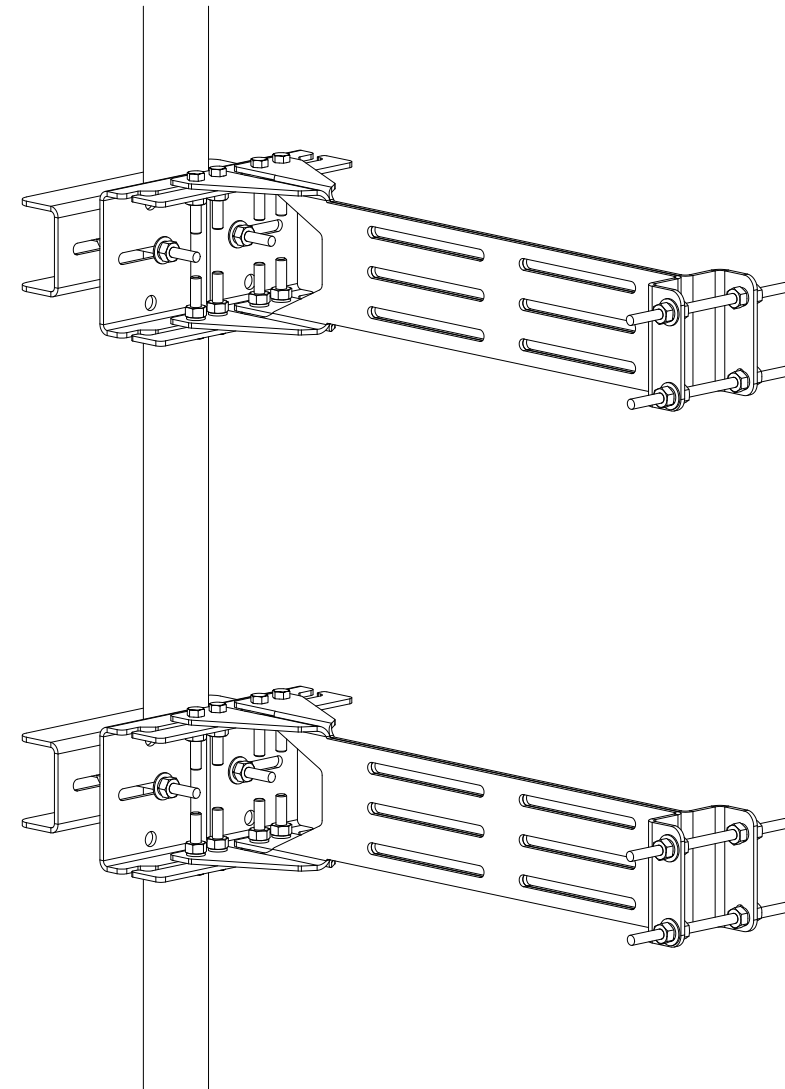


PARTS LIST						
ITEM	QTY	PART NO.	PART DESCRIPTION	LENGTH	UNIT WT.	NET WT.
1	4	X-RRUSPT	SIDE PANEL FOR RRU-FU2	30 in	6.79	27.15
2	2	X-RRUSBPT	BACKING PLATE FOR ANTENNA STANDOFF WELDMENT	12 in	5.42	10.83
3	2	X-RRUSBPTB	BACKING PLATE FOR ANTENNA STANDOFF WELDMENT	12 in	3.62	7.25
4	4	G38R-8	3/8" X 8" THREADED ROD (HDG.)		0.25	1.00
5	4	G38R-6	3/8" x 6" THREADED ROD (HDG.)		0.19	0.75
6	16	G3802	3/8" x 2" HDG HEX BOLT GR5		0.09	1.40
7	32	G38FW	3/8" HDG USS FLATWASHER		0.01	0.38
8	40	G38LW	3/8" HDG LOCKWASHER		0.01	0.27
9	40	G38NUT	3/8" HDG HEAVY 2H HEX NUT		0.03	1.35
					TOTAL WT. #	50.39



ALTERNATE MOUNTING CONFIGURATION

## TOLERANCE NOTES

TOLERANCES ON DIMENSIONS, UNLESS OTHERWISE NOTED ARE:  
SAWED, SHEARED AND GAS CUT EDGES ( $\pm 0.030"$ )  
DRILLED AND GAS CUT HOLES ( $\pm 0.030"$ ) - NO CONING OF HOLES  
LASER CUT EDGES AND HOLES ( $\pm 0.010"$ ) - NO CONING OF HOLES  
BENDS AND ANGLES ARE  $\pm 1/2$  DEGREE  
ALL OTHER MACHINING ( $\pm 0.030"$ )  
ALL OTHER ASSEMBLY ( $\pm 0.060"$ )

PROPRIETARY NOTE:  
THE DATA AND TECHNIQUES CONTAINED IN THIS DRAWING ARE PROPRIETARY INFORMATION OF VALMONT INDUSTRIES AND CONSIDERED A TRADE SECRET. ANY USE OR DISCLOSURE WITHOUT THE CONSENT OF VALMONT INDUSTRIES IS STRICTLY PROHIBITED.

DESCRIPTION

DUAL  
RRU MOUNT

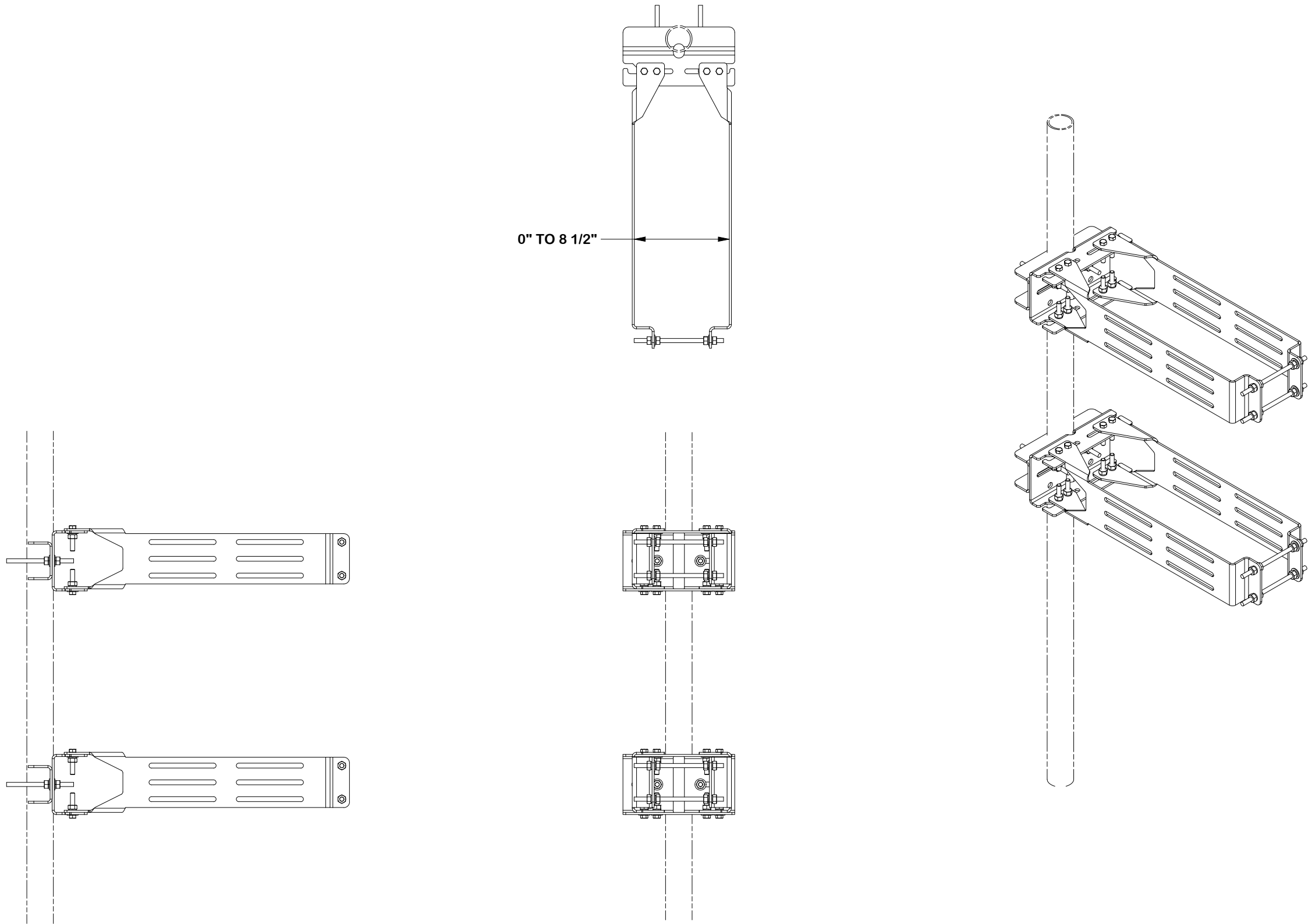
CPD NO.		DRAWN BY CEK 10/6/2022		ENG. APPROVAL	
CLASS 81	SUB 02	DRAWING USAGE CUSTOMER		CHECKED BY	

**SITE PRO 1**

Engineering  
Support Team:  
1-888-753-7446

A valmont COMPANY


PART NO.	RRU-FU2
DWG. NO.	RRU-FU2



TOLERANCE NOTES

TOLERANCES ON DIMENSIONS, UNLESS OTHERWISE NOTED ARE:  
SAWED, SHEARED AND GAS CUT EDGES ( $\pm 0.030''$ )  
DRILLED AND GAS CUT HOLES ( $\pm 0.030''$ ) - NO CONING OF HOLES  
LASER CUT EDGES AND HOLES ( $\pm 0.010''$ ) - NO CONING OF HOLES  
BENDS AND ANGLES ARE  $\pm 1/2$  DEGREE  
ALL OTHER MACHINING ( $\pm 0.030''$ )  
ALL OTHER ASSEMBLY ( $\pm 0.060''$ )

PROPRIETARY NOTE:  
THE DATA AND TECHNIQUES CONTAINED IN THIS DRAWING ARE PROPRIETARY INFORMATION OF VALMONT INDUSTRIES AND CONSIDERED A TRADE SECRET. ANY USE OR DISCLOSURE WITHOUT THE CONSENT OF VALMONT INDUSTRIES IS STRICTLY PROHIBITED.

DESCRIPTION				<div><div><div>SITE PRO</div><div>1</div></div><div>Engineering Support Team: 1-888-753-7446</div></div> <div>A valmont  COMPANY</div>			
CPD NO.		DRAWN BY CEK 10/6/2022		ENG. APPROVAL		PART NO. RRU-FU2	
CLASS 81	SUB 02	DRAWING USAGE CUSTOMER		CHECKED BY		DWG. NO. RRU-FU2	

PAGE 2 OF 2